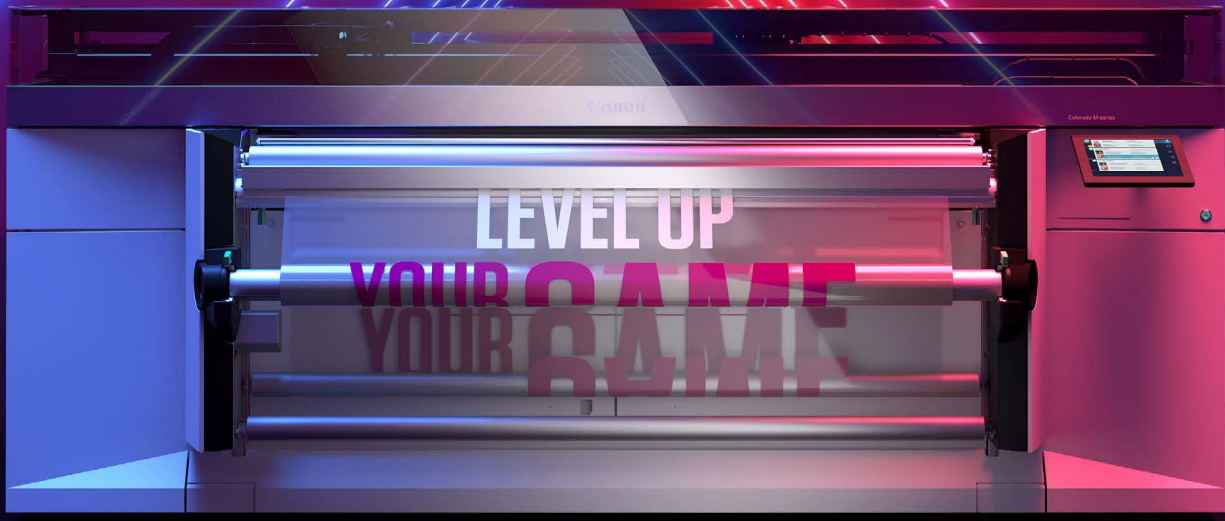


Canon

CANON SOLUTIONS AMERICA

COLORADO M-SERIES



SMART CHANGE STARTS HERE.

READY, SET, GO!

ARE YOU READY FOR THE NEXT LEVEL?

With the Colorado M-series, 64" roll-to-roll printers powered by patented UVgel technology, you can level up your business and your creativity.

Say "yes" to more jobs, even the very challenging ones, and help meet your high productivity and turnaround standards at the same time. Create unique applications with matte and glossy elements in the same print, without varnish. Jump start your potential with a smart financial investment in the large format graphics business. What's even better: this next-generation Colorado M-series is upgradeable in the field, allowing you to level up your machine as you level up your business.

THE POWER OF UVGEL, NOW WITH OPTIONAL WHITE INK!

The proven UVgel ink technology is unique in the large format print market, and the Colorado printers were developed to allow you to get the most out of its features. Now, we are offering optional UVgel white ink. And not just any white....

WHITE INK WITHOUT WORRY

- High opacity
- Same ease of maintenance as any other color
- High-speed white production

THE COLORADO M-SERIES OVERVIEW

A modular and in-field upgradeable platform.



COLORADO
M3 BASE



COLORADO
M3W



COLORADO
M3 PRO



COLORADO
M3W PRO



COLORADO
M5 PRO



COLORADO
M5W PRO

**LEVEL UP
YOUR CREATIVITY**

Wide, unique application range
including optional white ink

**LEVEL UP
YOUR PRINTER**

Modular design, field-upgradeable



**LEVEL UP
YOUR PRODUCTIVITY**

Productive by nature

**LEVEL UP
YOUR BUSINESS**

A smart financial investment

LEVEL UP YOUR CREATIVITY

Wide and unique application range including optional white ink

The original Canon Colorado series was designed for a wide application range. Today's Colorado M-series takes media, ink, and print mode possibilities to the next level to inspire your creative ambitions and impress your customers with reliable quality, help with your turnaround times, and make unique applications achievable.

WHITE INK WITHOUT WORRY

Have you heard that printing with white ink is a hassle? With the new Colorado M-series and UVgel technology, you can lay these worries to rest. Our highly productive UVgel white ink works as any other color. Based on internal testing, depending on competitive unit, printing with white ink is up to three times faster than comparable technologies—even for multilayer modes—and uses 40 percent less ink.



FLXfinish+

Optional FLXfinish+ is the unique ability to print matte, gloss, or mixed matte and gloss in one go without a varnish, shaking up the world of large-format graphics.

FLXture

The five layer PRISMAguide XL FLXture recipe with the optional UVgel white ink helps make it possible to incorporate wood and leather reliefs, embossments, and other textures into printed graphics.

QUALITY

The Colorado M-series features important industry-standard certifications that highlight the quality of the print output like 3M™ MCS™ Warranty or GREENGUARD Gold certification.

WIDE APPLICATION RANGE

The Colorado M-series gives your customers amazing design freedom, with impressive new media options:

- Textured
- Transparent
- Colored
- Reflective
- Magnetic (optional)

This expands on the wide media range the Colorado printers are known for, including self-adhesive vinyl, paper, banner media, film, canvas, and textiles, plus heat-sensitive media and cost-effective uncoated media. Unidirectional print modes are available to reach high-quality print on challenging media types.





UVGEL & FLXFINISH⁺

THE UVGEL QUALITY ADVANTAGE

The special gel consistency of the UVgel inks make them ideal for fast, high-quality printing. The resulting prints have a wide color gamut, crisp image quality, and are instantly dry without smudging or sticking.

- Instant pinning and dot gain control
- Low temperature curing—suitable for thin and heat-sensitive media
- Scratch resistance
- Easy lamination, smooth ink fill
- Consistent color print to print and job to job
- Odorless and instant dry inks

FLXfinish⁺

Made possible by the gelling characteristics of UVgel ink, the optional FLXfinish⁺ allows you to add a velvety matte finish to interior décor products, a brilliant gloss finish for display prints, or unique combinations of the two to create attention-grabbing visuals, with perfect registration and without the need for an extra printhead or ink channel. FLXfinish⁺ helps you produce amazing products without increasing the running costs of your work.





WHITE INK WITHOUT WORRY

The Colorado M-series now offers the UVgel advantage also in white. Our highly productive optional UVgel white ink works as any other color, with no extra maintenance. Depending on competitive unit, printing with white ink is up to three times faster than comparable technologies—even for multilayer modes—and uses 40 percent less ink.

The printed white ink is designed to keep its color over time. It has the flexibility that you expect for all your applications, including multilayer application of up to five layers—to be cut, stretched, and finished, directly after printing. And the automated maintenance features of the Colorado M-series are designed to help keep the ink and nozzles ready to print all day, every day.

PRINT EFFICIENTLY WITH WHITE INK

The Colorado M-series UVgel technology is known for its efficient use of ink, and this efficient ink use is also true for UVgel white ink. There is no separate action, set-up, or maintenance needed to print an application that includes

white ink. With productive print modes that are realistic for a high-quality operation, applications with white ink are a great way to increase your printing capabilities.

Use PRISMAguide XL software for easy, spectacular, multilayer white ink applications.

- **Spot color:** printing color and white at the same time on either colored or transparent media.
- **Underflood printing:** printing a white layer underneath a color image to help provide a better contrast on colored or transparent media.
- **Overflood printing:** printing a white layer on top of a color image on transparent media to provide color vibrancy for window graphics.
- **3-layer printing:** printing a white layer in between two layers of color, which is ideal for high-end and day/night backlit signage applications.
- **5-layer printing:** printing consecutive layers of color, white, black, white, and color for extra opacity, enabling a different image on either side of transparent media to create double-sided window graphics.

LEVEL UP YOUR **PRINTER**

Modular design, field-upgradeable



A Colorado M-series printer is an investment in taking your business to the next level—today and in the future. Its power and versatility can become the heart of your business, and it can grow with you as you expand.

ROCK-SOLID QUALITY

The Colorado family is built to last, with high uptime and consistent print output over time. Low-maintenance by design, the Colorado M-series is designed to minimize downtime due to maintenance.

ROBUST AND RELIABLE

Canon's own next-level UVgel 425 printhead has doubled the amount of nozzles for outstanding speed and reliability, using fewer printheads. Colorado M-series features a whole new automatic maintenance concept: a tissue cassette which automatically cleans the nozzles, based on real-time nozzle status information, provided by our patented Piezo Acoustic Integrated Nozzle Technology (PAINT).

SMART MEDIA HANDLING

The Colorado M-series also boasts next-level media detection sensors in its media path to support the use of a wider range of media. For instance, it can now use white markers that allow printing on colored media, and newly developed robust markers for accurate registration on heavily textured media.

ONE MACHINE, MANY CONFIGURATIONS

You can configure your Colorado M-series machine to your current business needs. There are many different types of optional upgrades available for the Colorado M-series, most without needing a service visit.

- In-field speed upgrade, taking your M3 model to an M5 model.
- Temporary 30-day Speed licenses are also available for the M3 models to run at M5 speeds during your peak production times. Only works with 700ml ink bottles.

- Did you choose a model without white ink? Add it as an upgrade—with just a service visit.
- Larger 1l ink bottles, and smaller 700 ml ones—or you can use them both (for the M5 Pro and M5W Pro) for easier stock management.
- FLXfinish+: make prints with a glossy or matte finish, or mix both matte and gloss effects within one single print.
- Double-sided printing.
- Print-side-in printing.
- Magnetic Media Kit.
- Dual roll capabilities.

MINIMAL OPERATOR INTERVENTION

One of the hallmarks of a machine built to industrial standards is its ease of use. The Colorado M-series has many features to help reduce labor costs and increase your operators' job satisfaction by freeing them to do more high-value tasks.

- Fast, easy media loading with the option to have two online rolls.
- Ink refills during printing.
- Canon PRISMAguide XL software to simplify preparation of complex print applications is designed to help provide first-time-right printing, and save application recipes for later re-use.
- Automated printhead maintenance and nozzle compensation.

In other words, the Colorado M-series can almost watch over itself. With the PRISMA remote app, operators can monitor the printer status on their compatible smartphone, smartwatch, or tablet at any time, even when running overnight jobs.

LEVEL UP YOUR BUSINESS

A smart financial investment

The features of the Colorado M-series printers speak for themselves. But with all of this, is it still affordable? We can answer that with a wholehearted “yes”. The Colorado M-series was designed with low total cost of ownership in mind, making it a smart financial investment.

LOW OPERATIONAL COSTS

The Colorado M-series was designed to get the most out of each day, with reliable, consistently high productivity and uptime. The UVgel technology is designed for low ink and energy usage—for stunning results. And with our PRISMAguide XL software, you can enjoy first-time-right printing.

HIGH VALUE APPLICATIONS

Customers are happy to pay more for creative, high-value applications, especially if they come with a fast turnaround time. The Colorado M-series comes with a wide media range, which is excellent for creativity but also supports cost-conscious media options. Canon’s excellent sensors and software are designed to provide very little waste. Finally, the machine doesn’t take an operator’s full attention to run, leaving them free for other valuable tasks.

FUTURE-PROOF MODULAR BUILD

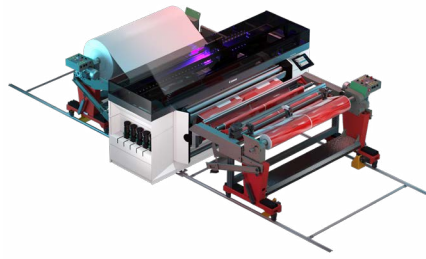
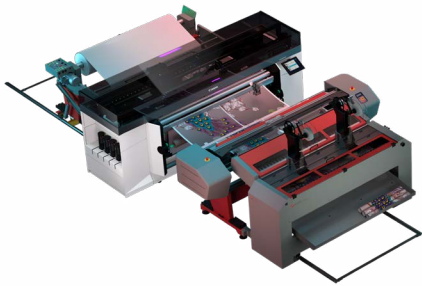
A key argument for the Colorado M-series is its upgradeability. By investing only in the productivity level you need at the time, you can help optimize your investment. And with available upgrades, you are not boxed into your current business level. You can increase your speed, options, and productivity as the need arises.

All in all, this can result in a high return on investment.

When investing in a printer, a make-or-break criterion is: can it get the work done? The Colorado M-series can do that, and more: it can help you take your productivity to the next level—smoothly, without fuss, and in spectacular quality. And all that at a low total cost of ownership.

SHORTER TURNAROUND TIMES

These days, for most large-format print jobs, customers want a 24-hour turnaround or less. The Colorado M-series and the next-level UVgel technology are designed to help you to say “yes” to wide-format jobs with ease, even highly challenging ones. Enjoy more color deposited in fewer passes and prints that are instantly dry, often don’t require lamination, and are ready for further finishing. And the best part? It’s up to three times faster than comparable technologies.



UVGEL WALLPAPER FACTORY

The UVgel Wallpaper Factory offers a complete digital printing and cutting solution, helping to enable mass customization and boundless creativity for unique wallcovering products. With integrated cutting and coreless rewinding, coupled with a robust bulk feed system, it allows for unattended operation overnight.

UVGEL PRINT FACTORY

Help maximize efficiency and decrease media load frequency with cost-effective jumbo rolls for printing. The UVgel Print Factory handles 30” diameter rolls up to 880 lbs. in weight, and helps to enable continuous, operator-free production. Attain exceptional, large-volume output without compromising image quality or durability.

UVGEL PACKAGING FACTORY

The UVgel Packaging Factory helps to create high quality preprinted sheets for lamination onto fiberboard and corrugated packaging. The cut and stack solution with a jumbo roll loader produces output sheets compatible with litho lamination, creasing, folding, and gluing workflows.

EXTERNAL MODULES	UVGEL WALLPAPER FACTORY	UVGEL PRINT FACTORY	UVGEL PACKAGING FACTORY
Jumbo Roll Loader	●	●	●
Jumbo Roll Interface Kit	●	●	●
X/Y Cutter	●	-	●
Rewinder	○	-	-
Jumbo Roll Rewinder	-	-	-
Stacker	-	●	●

● Standard ○ Optional - Not available

WIDE APPLICATION RANGE



DECALS

Eye-catching special metallic or holographic stickers to decorate and personalize objects.

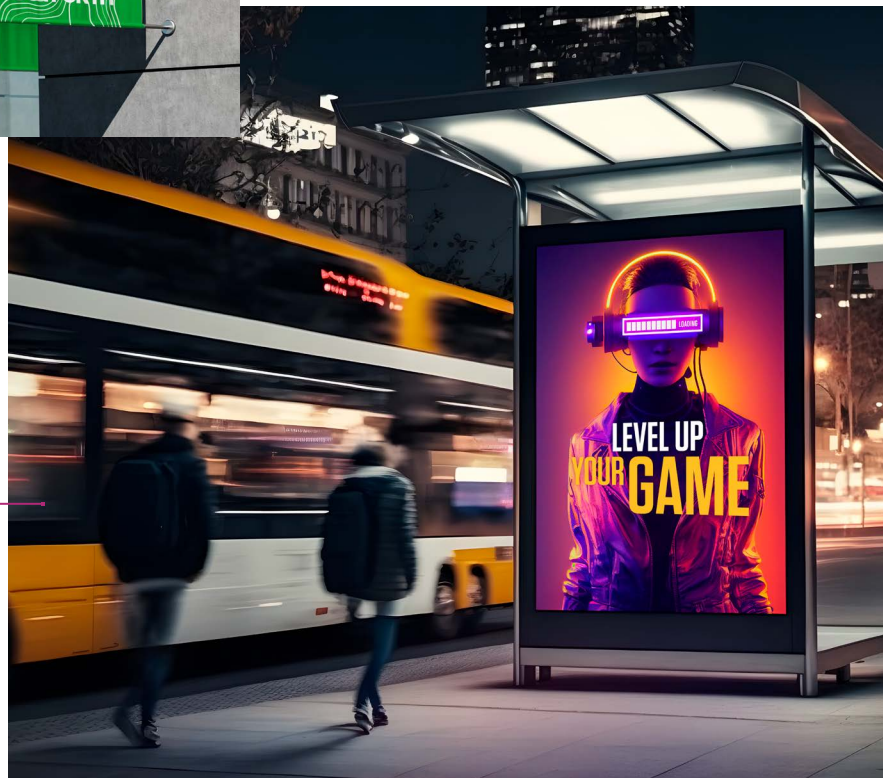


OUTDOOR ADVERTISING

Exceptionally low running costs for price-sensitive outdoor banners and blueback applications.

BACKLIT LIGHT BOX

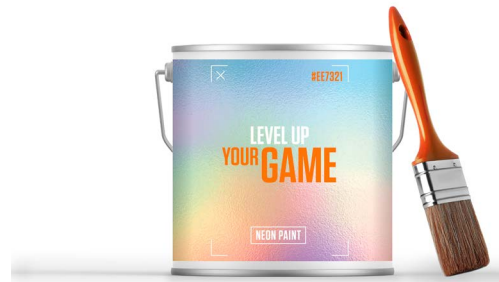
Powerful, high-density images thanks to UVgel. Now even richer in color through multilayer printing.





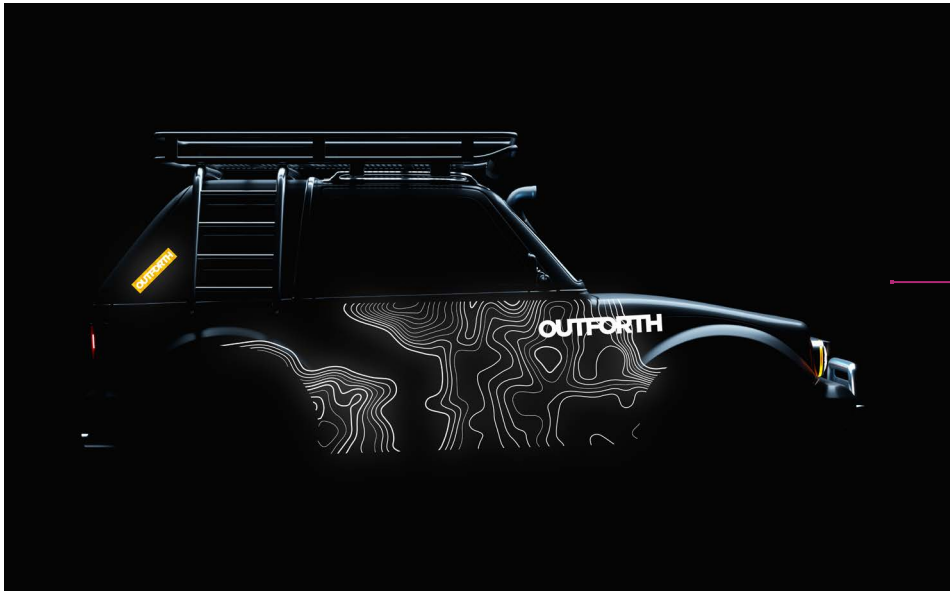
FLOOR GRAPHICS

Robust to walk and work on, with brilliant colors that create an eye-catching image.



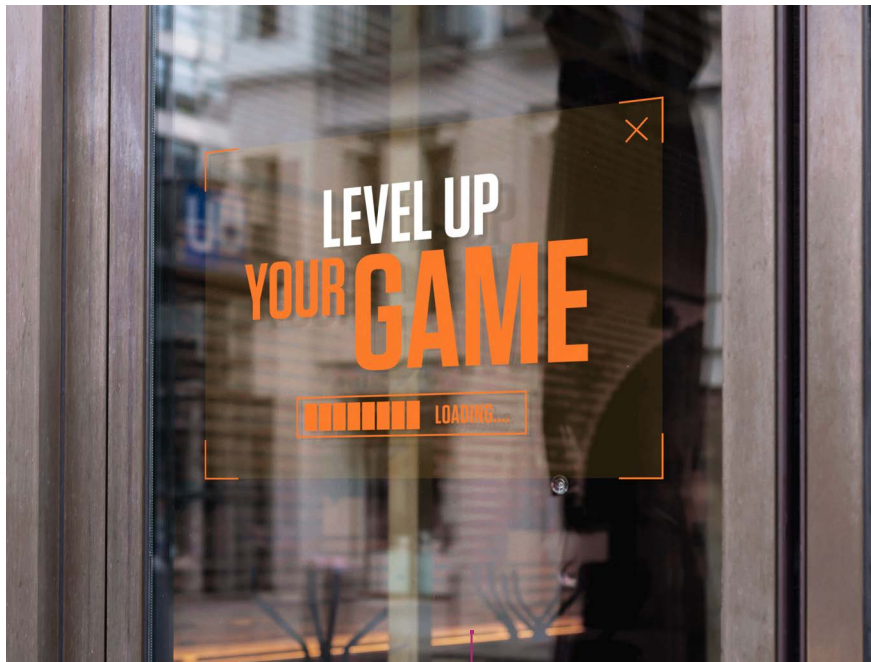
LABELS

A two-in-one deal: labels provide product information but also attract attention on the store shelves.



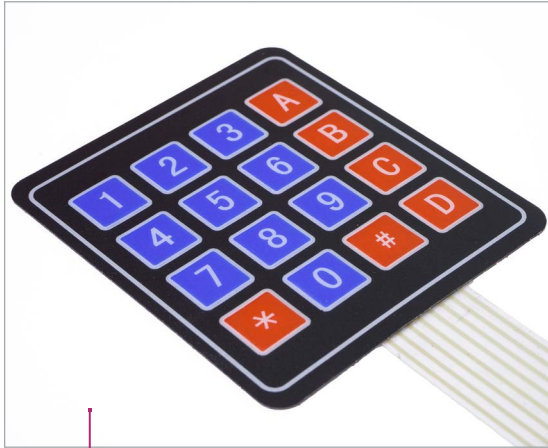
FLEET GRAPHICS

The combination of matte and glossy prints increases your design options. 3M MCS-certified, inks, for stretchable, robust, and washable prints, even without lamination.



WINDOW GRAPHICS

Strong colors on clear media that is often applied wet to reduce bubbles. Wash and weather-resistant, even without lamination.



HEAT TRANSFER

Transfer film and UVgel print, with excellent washability. Want to use a standard heat press? No problem! Enjoy limitless creativity.



MEMBRANE SWITCHES

High-quality images thanks to UVgel's excellent dot control.



WALLPAPER

Robust, scratch-resistant wallpaper with excellent dimensional stability and color consistency thanks to UVgel. Digital wallpaper done right!



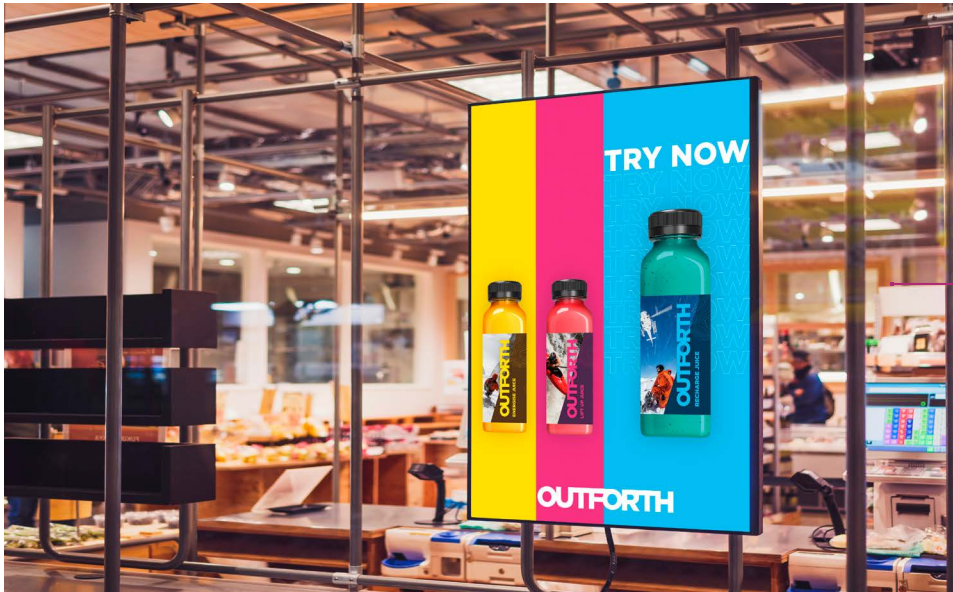
MAGNETICS

Extremely easy to install. Works great with UVgel—in white, pre-colored, or PVC-free.

PACKAGING

Digital printing with UVgel enables short runs and bespoke designs to increase the joy of unboxing. Litho-laminated or direct onto paperboard.





**FRAMED SOFT
SIGNAGE RETAIL
POSTER**

GREENGUARD Gold certification.

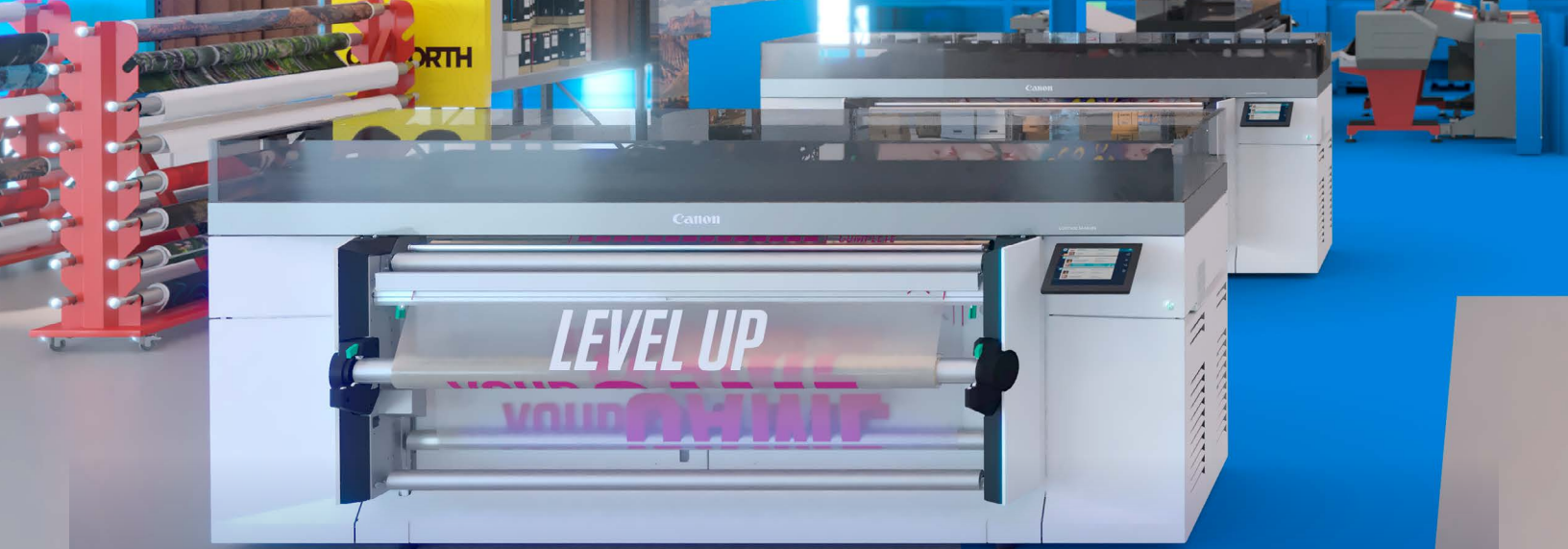
PHOTO/ FINE ART

*Exceptional artistic
freedom with flexible,
robust UVgel inks for manual
or automatic frame mounting.*



WRAPPING PAPER

*Create personalized gifts for that
perfect moment they will never
forget. Of course, printed on
uncoated and recyclable media.*



PRISMA XL SUITE

CREATE IMPACT BEYOND IMAGINATION

Optional PRISMA XL Suite is your set of workflow software solutions for large format graphics.

- Deliver exceptional and inspiring print applications every day.
- Help to increase your creativity and streamline your production.
- Deliver print applications that stand out.



PRISMAguide XL

Is a powerful and easy-to-use design and workflow management application for print service providers and industrial printing companies.



PRISMAservice

The ultimate platform for all service activities.

- Helps provide fast, efficient, and effective customer support.
- Integrates a wide range of Canon service tools in one unified portal.
- For servicing partners and servicing customers.



PRISMA remote app

Tightly integrates into your production print operation.

- 24/7 insights into performance of your Colorado printer.
- Not only shows what's going on, tells what action is needed to keep your printer running.
- Compatible iOS and Android device apps available.



PRINTSIGHT FOR COLORADO

The PrintSight software enables print-for-pay business owners or their production staff to closely monitor many important aspects of their Colorado M-series printers from anywhere on their network. PrintSight displays a range of data in an intuitive user interface, allowing for real time reporting of ink/toner usage, media type printed, square footage, print time, machine status, and more.

PrintSight takes the guesswork out of knowing key details such as if you are charging enough on a particular job or determining which machines are under or over utilized. With the ability to enter your ink cost per liter/bottle and media cost, PrintSight can instantly calculate the cost of the job.

- ➔ MONITOR MACHINE STATUS
- ➔ SEE TYPES OF MEDIA PRINTED AND SQUARE FOOTAGE USED
- ➔ VIEW JOB PRINT TIMES
- ➔ CALCULATE THE COST OF THE JOB

COLORADO M-SERIES

PRINTING	COLORADO M3 BASE	COLORADO M3W	COLORADO M3 PRO	COLORADO M3W PRO	COLORADO M5 PRO	COLORADO M5W PRO
Printing method	UVgel piezoelectric inkjet					
White	○	●	○	●	○	●
Printing modes: gloss	●					
High Key	1,195 ft ² /hr			1,709 ft ² /hr		
Express	840 ft ² /hr			1,229 ft ² /hr		
Speed	592 ft ² /hr			861 ft ² /hr		
Production	420 ft ² /hr			610 ft ² /hr		
High Quality	312 ft ² /hr			427 ft ² /hr		
Premium	237 ft ² /hr			290 ft ² /hr		
Specialty	215 ft ² /hr			222 ft ² /hr		
Printing modes: matte	○	○	●	●	●	●
Express	388 ft ² /hr			495 ft ² /hr		
Speed	291 ft ² /hr			409 ft ² /hr		
Production	237 ft ² /hr			333 ft ² /hr		
High Quality	194 ft ² /hr			290 ft ² /hr		
Specialty	140 ft ² /hr			215 ft ² /hr		
Backlit	194 ft ² /hr			215 ft ² /hr		
Backlit Density	108 ft ² /hr			108 ft ² /hr		
Printing mode: mixed matte/gloss (FLXfinish+)	○	○	●	●	●	●
FLXfinish+	75 ft ² /hr			75 ft ² /hr		
Printing modes: spot white 1 layer	○	●	○	●	○	●
Express	291 ft ² /hr			388 ft ² /hr		
Speed	237 ft ² /hr			323 ft ² /hr		
Production	194 ft ² /hr			258 ft ² /hr		
High Quality	140 ft ² /hr			194 ft ² /hr		
Specialty	129 ft ² /hr			129 ft ² /hr		
Printing modes: white underflood/overflow 2 layers	○	●	○	●	○	●
Speed	215 ft ² /hr			215 ft ² /hr		
Production	151 ft ² /hr			151 ft ² /hr		
High Quality	108 ft ² /hr			108 ft ² /hr		
Specialty	75 ft ² /hr			75 ft ² /hr		
Printing modes: white 3 layers	○	●	○	●	○	●
High Quality	75 ft ² /hr			75 ft ² /hr		
Specialty	54 ft ² /hr			54 ft ² /hr		
Printing modes: white 5 layers	○	●	○	●	○	●
High Quality	43 ft ² /hr			43 ft ² /hr		
Specialty	32 ft ² /hr			32 ft ² /hr		
Robust Unidirectional	16 ft ² /hr			16 ft ² /hr		
Temporary Speed Upgrade License (30 Day)	○	○	○	○		-
Print resolution	Up to 1,800 dpi					
Ink types	Canon UVgel 460 ink					
Ink color	CMYK	CMYKW	CMYK	CMYKW	CMYK	CMYKW
Ink packaging						
1 x 700 ml ink bottle	●			●		
2 x 1 liter ink bottle	-			●		
Ink reservoir per ink color	1.8 liter			2.1 liter		
Refill while printing	●					
Printhead						
UVgel 425	4	5	4	5	4	5
High frequency drop-on-demand piezo-electric printhead	●					
PAINT (Piezo Acoustic Integrated Nozzle Technology)	●					
Automatic maintenance	●					
Curing	UV LED					

● Standard ○ Optional - Not available

Technical specifications

MEDIA	COLORADO M3 BASE	COLORADO M3W	COLORADO M3 PRO	COLORADO M3W PRO	COLORADO M5 PRO	COLORADO M5W PRO
Roll width	Up to 64" (1,625 mm)					
Print margin	0.21" (5.3 mm) ¹					
Roll weight	Up to 110 lbs. (50 kg)					
Roll diameter	Up to 8.7" (220 mm)					
Media thickness	Up to 0.03" (0.8 mm)					
Media input						
Print side out	○	○	●	●	●	●
Print side in/Double-sided printing	○	○	●	●	●	●
1 roll	●	●	●	●	●	●
2 rolls (automatic roll-feeding and -switching depending on media)	○	○	●	●	●	●
Magnetic Media Kit ²	○	○	○	○	○	○
Jumbo roll interface	-	-	-	-	○	○
CERTIFICATIONS						
General	UL GREENGUARD Gold, ASTM F793/F7693M-15 (Category V, Type II)					
Media Certifications	3M MCS™, Avery ICS™ and Orafol OCS™					
WARRANTY						
Parts Warranty	2 Year Warranty with unlimited square footage Usage					
Printhead Warranty	2 Year Warranty or 215K square feet usage (whichever comes first)					
INTERFACE						
	Ethernet (100/1,000 Mbit/s)					
DIMENSIONS						
Printer W x D x H	3,020 x 1,095 x 1,300 mm					
WEIGHT						
	750 kg					
WORKING ENVIRONMENT						
Operation printer	18–30 °C (recommended 20–27 °C), 20 - 80% RH (no condensation)					
POWER						
	0 W - Off, 250 W - Standby, 1.6 kW - Ready, 2.3 kW - Printing					
Consumption	2 inputs, each 200-240V +/- 10%, 50/60 Hz, 16/6 A.					
Source	Printer is declared under Radio Equipment Directive (RED)- 2014/53/EU					
REGULATORY CERTIFICATION						
Declaration of conformity	Compliant with EN62479, EN301 489-1, EN301 489-3, EN300-330 FCC Part 15 and RSS-210 certified (module)					
Radio	IEC/EN/UL/CSA 62368-1 compliant Applicable marks: CE, TÜV-GS, C-UL-US, RCM					
Safety	Emission: Class A compliant according CISPR 32, FCC part 15, and ICES-003 Immunity: CISPR 35 compliant Applicable marks: CE, FCC, IC, VCCI, RCM, CETECOM					
EMC ENVIRONMENTAL						
	WEEE, RoHS directive 2011/65/EU, REACH, CE					
SOFTWARE						
RIP Compatibility ³	ONYX Graphics, Caldera, EFI, PrintFactory, ColorGATE, ErgoSoft, Shiraz					
PRISMAguide XL	○					
PRISMA remote app	●					
PRISMAservice	●					

Specifications subject to change without notice.

● Standard ○ Optional - Not available

¹ Margin 0.43 mm when Media Step Control enabled.

² Magnetic media can only be used in Roll Position 1. The magnetic kit may impact feeding of other media in Roll Position 1 with no impact to Roll Position 2. Compliant magnetic media needs to be less than 500 microns thick, and the media width times the squared media thickness ($W \times T^2$) in mm needs to be less than 250. Non-compliant magnetic media needs to be tested and approved by the Canon Customer Experience Center before use. Any non-compliant media still needs to be within standard Colorado media specifications to be tested.

³ Contact RIP manufacturer for required version.



Canon

CANON SOLUTIONS AMERICA

Large Format Solutions

100 Park Blvd., Itasca, IL 60143

CSA.CANON.COM

1-800-714-4427 | us.info@csa.canon.com

Canon is a registered trademark of Canon Inc. in the United States and elsewhere. Colorado, FLXfinish+, FLXture, PRISMA, and UVgel are registered trademarks or trademarks of Canon Production Printing Netherlands B.V. Android is a trademark of Google LLC. iOS is a registered trademark or trademark of Cisco Corporation in the United States and elsewhere, and is used by Apple Inc. under license. All other referenced product names and marks are trademarks of their respective owners and are hereby acknowledged. Availability, prices, and specifications are subject to change without notice. Products shown with optional accessories. Neither Canon Inc., Canon U.S.A. Inc., nor Canon Solutions America represents or warrants any third-party product or feature referenced hereunder. UVgel 460's GREENGUARD Gold Certification resulted from its testing against the UL 2818 - 2013 Gold Standard for Chemical Emissions for Building Materials, Finishes and Furnishings.

Not responsible for typographical errors. Certain images are simulated.

© 2024 Canon Solutions America, Inc. All rights reserved.

6/24-0979-10886

0979-10886 6.20.24